



# Welcome To The Kyone Metal World

Bringing over 3 Decades of industry experience, Kyone Metal World has established a strong presence in both the Indian and international markets. Our state-of-the-art manufacturing facility in Jamnagar, Gujarat (India) is equipped with the latest technology and machinery, enabling us to meet the diverse needs of our customers. Backed by a skilled and dedicated team, we are committed to delivering excellence.

**Kyone Metal World** is **ISO 9001:2015** Certified, ensuring our products meet the highest quality standards.

We are in business of manufacturing and exporting metal components and OEM parts to all over Globe as per customer requirement only in all ferrous & non ferrous alloys like Steel, Mild Steel, Carbon Steel, Stainless Steel, Iron, Brass, Copper, Aluminium, Zamac, Bronze and Brass alloys etc. with utmost precision.

## Application of Products

- ◆ Brass Parts
- ◆ Stainless Steel Parts
- ◆ Steel & Carbon Steel Parts
- ◆ Aluminium Parts
- ◆ Copper & Bronze Parts
- ◆ Iron Parts
- ◆ Fasteners
- ◆ Fitting

# Production Methods

## Machining

Type Of Machining :

- ◆ Automatic bar machining
- ◆ CNC Multi-Spindle Machining
- ◆ Custom machining
- ◆ Forged Machining
- ◆ Cast Machining

## Casting

Our Casting Process:

- ◆ Sand Casting
- ◆ Die Casting
- ◆ Investment Casting
- ◆ Shell Mold Casting

## Forging

Our Forging Process:

- ◆ Hot Forging
- ◆ Cold Forging
- ◆ Open Die Forging
- ◆ Impression die forging
- ◆ Upset Forging

## Sheet Metal Stamping

Our Stamping Process:

- ◆ Bending
- ◆ Flanging
- ◆ Embossing
- ◆ Blanking
- ◆ Coining
- ◆ Drawing
- ◆ Stretching
- ◆ Ironing
- ◆ Reducing/Necking
- ◆ Curling
- ◆ Hemming

## Our Surface Finishing Specifications:

- As-machined
- Grinding
- Anodizing
- Electroplating
- Polishing
- Powder Coating
- Brushing
- Painting
- Black Oxide
- Part Marking

# List of Industries We Serve

- AutoMobile
- Agriculture
- Electrical & Electronics
- Oil & Gas
- Pneumatic & hydraulic
- Hardware
- Building & Infrastructure
- Industrial Assembly
- Oem Parts

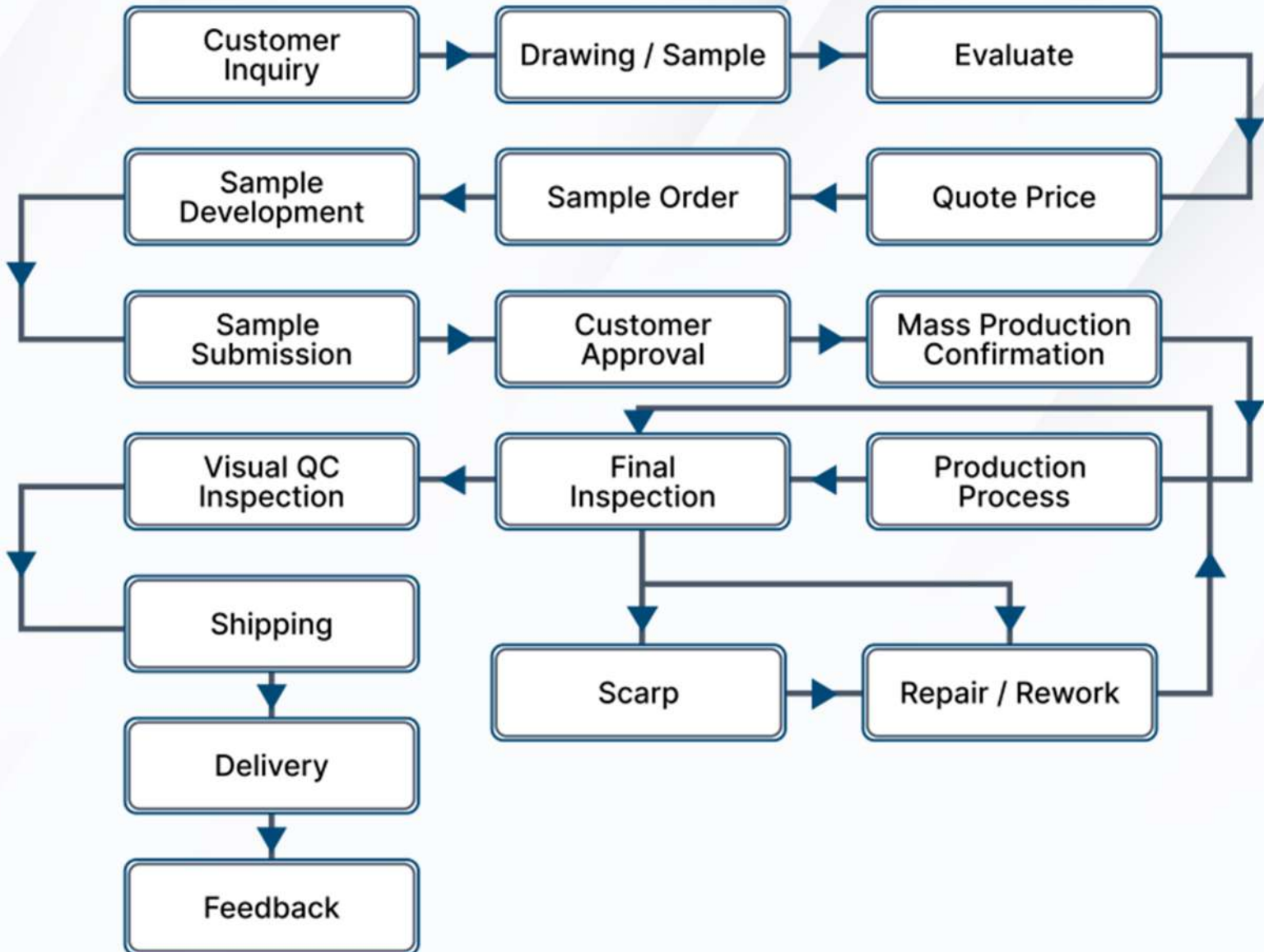
# List of Equipments

- Profile Projector with DRO Unit
- Spectrometer
- Coordinate Measuring Machine(CMM)
- Vision Measuring Machine(VMM)
- Pressure Testing Rig
- Hardness Tester
- Tensile Tester
- Micrometer [up to 150mm]
- Point Micrometer
- 3 Point Micrometer
- Blade Micrometer
- Height & Depth Gauges
- Thickness Gauges
- Vernier Calipers
- Vernier Height Gauge
- Pitch Gauges
- Radius Gauges
- Pin Gauges
- Thread Plug Gauges
- Thread Ring Gauges

# List of Machinery

- CNC Vertical Machining Centers
- CNC Milling Machining Centers
- CNC Turning Lathe Machines
- Semi Automatic Machines
- Hydraulic Power Press Machines
- Power Press Machines
- Lathe Machines
- Multi Slide Trobe Machines
- Drilling Machines
- Cutting And Slotting Machines
- Threading & Shaping Machines
- Grindinging Machines
- Forging
- Casting Foundary

# Operation Flow Chart



## ► Customer Inquiry

- ◆ Connect with us for prompt assistance and personalized solutions to address your inquiries and meet your needs.

## ► sample Development

- ◆ Sample development is the process of designing, building, and testing a prototype to evaluate its feasibility and functionality before full-scale production or implementation.

## ► Customer Approval

- ◆ Customer approval signifies satisfaction and endorsement, reflecting a positive experience. It validates product or service excellence and fosters trust, essential for business success and growth.

## ► Mass Production

- ◆ Mass production is the efficient manufacturing of large quantities of goods, utilizing standardized processes and assembly lines to achieve economies of scale and lower costs.

## ► Delivery

- ◆ We have different unit for packaging for storing finished products and packing is done accurately.

## Products Description

We are a trusted and one of the leading manufacturers and exporters of Brass Precision Components and Precision Parts. With its superior dimensional accuracy, sturdiness, durability and resistance to corrosion this make our components highly demandable in the market. All these precision components are manufactured using high quality material and with highly accurate in dimension. We can also customize these precision components as per the requirements and specifications of clients. KMW always offers quality approved precision parts to our respected clients. We make sure that our brass precision components are tested rigorously before its final delivery to clients. They are available in different quality grades to suit customer requirements.



Cable Glands



Cpvc/Upvs & PPR insert



Spindle



Gas Fittings Plug



Valve



Natural Links



Terminal



Pin & Socket



Sheet Metal Parts



Brass Bush



Betty Terminal



Panel Hinges



Extension Nipple



Nozel Parts



Brass Manifold



Needle Control Valve

# Stainless Steel Parts

## Products Description

We are prominent manufacturer and supplier of the finest quality assortment of Stainless Steel Components. These steel components are highly used in the fitting of automotive parts, electronic machines, doors, for connecting two or more work piece together, Diesel Engine, Textile Machine and Various Industries. The offered steel components are checked on different parameters in order to ensure its flawlessness. In addition, our stainless steel components are offered in different specifications and can be customized, as per the needs of our customers.



Shaft Couplings



Thread Insert



Wire Rope Clamp



Cable Clips



Threaded tube



Nipple



Pot Seal



Handle



Water Meter Casing

# Steel & Carbon Steel Parts

## Products Description

Iron and steel is an alloy made of iron, carbon, and other elements, and is now one of the most widely used metal materials. We manufacture a wide range of steel turned parts, including automotive parts, hydraulic parts, mechanical parts, power tool parts, special screws, and nuts, etc. We have a complete production line of CNC lathes and automatic lathes to finish all kinds of complicated steel parts through turning, milling, drilling, tapping, grinding, and other processes. In addition, according to the functional characteristics of the customer's products, the parts are hard heat-treated and chemically plated to improve wear resistance and toughness for maximum performance.



Engine valves Guide



Engine valves Cup - Collet



Nozzle



Socket



Female Cross Way



Rocker Arms



Spline Shaft



Clamp Studs



Exhaust Flanges



Hose Cap



Welch plugs



Lock Washers



Chain Sprocket



Earth Boss



# Aluminium Parts

## Products Description

We are equipped with impeccable state of the art infrastructure, which enables us to machine superior quality precision Aluminium components with or without anodizing as per customer specification. Aluminium parts are used in automotive sector, electrical industries, European and Indian railways brakes and shocker assemblies. Aluminium is a chemical element. Aluminium is the most abundant metal. Aluminium component designs typically alloying elements are copper, magnesium, manganese, silicon, tin, and zinc. Aluminium is a very good conductor of electricity and heat. Aluminium is a silvery-white metal part, the 13 elements in the periodic table. It is also the third most common chemical element on our planet after oxygen and silicon. Aluminium is a fascinating, flexible and highly versatile material element. It is the unique material properties of aluminium that make it perfect for everything from food preservation, light-weighting of cars to cell phones and airplanes.



Manifold Blocks



Collars



Collars



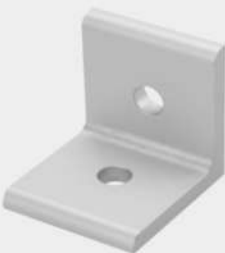
Electrical Clamps



Intake Manifolds



Collets



Brackets



Standoffs



Lay in Lugs

# Copper & Bronze Parts

## Products Description

Copper Parts & Components is KMW engaged in manufacturing and exporting high quality non-ferrous metal castings, components and wiring accessories. We have been manufacturing inexpensive yet precision metal components at our three manufacturing sites for more than 3 decades. We manufacture all types of copper parts, copper clamps, copper washers, copper electrical terminals, copper lay in lugs, copper forgings, copper pressed parts, copper terminal blocks, copper cable lugs, etc. Bronze casting parts have superior corrosion resistance, toughness, wear resistance and high strength. We are expert in designing & manufacturing high-quality castings for varied industries. Also, they can be treated for excellent tensile strength. Bronze exhibits good casting and welding properties. It's great for casting. It has non-sparking nature, ideal for fire-proof parts. Further, the bronze casting parts are used for industrial process fluids, high wear & heavy-duty environments. Applications of bronze castings include: valve components, pumps, wear parts, etc. Perfectly designed, they are used by chemical, petrochemical, heavy machinery, marine and other industries.



Manifold Blocks



DC Rod Clip



Electrical contacts



DC Tap Clip



Electrical Connectors



Earth Tags



Tube Strap



Bonded Earthing Rod



Bronze Ground Clamp

## Products Description

KMW is the final destination for sourcing quality Grey Iron casting & S.G. Iron Castings.

Our specialization in different types of high-quality castings offers you many advantages:

You can rely on consistent first-class quality for every project. Your castings made of spheroidal Graphite Cast Iron (Ductile Iron Casting) or Grey Cast Iron are masterfully refined with the know-how of our specialists and, if required, also machined. Thanks to the automation and semi-automation of our production facilities, we manufacture your series parts in a decided time frame using the latest casting and processing techniques.



Shorting Link



Tent Stake



Check Nut



Hose Jointer



Angle Bracket



Battery Terminals



Pipe Strap



Casing Head



Cast Bracket

## Products Description

KMW offers a wide range of cold Headed and bar turned / machined / stamped Fasteners as per DIN / ISO / BS / ASTM / JIS / GOST standard for various applications. All our Fasteners Confirm to International Specifications and have a very high thread quality. 'Go' and 'Not go' thread gauges are maintained throughout production and after plating. We cater to various industries like Medical, Heating, Switches, Application, Furniture, Automobile, Transformers, Pumps, Motors, Marine, Telecommunication, Petrochemicals, and Control Panels etc. Each of these different types of fasteners is a category unto itself, with many types to choose from. We provide Fasteners in standard as well as customized dimensions, depending upon the customer's needs and requirements.



Socket Screws



Pins



Hex Bolts / Screws



Hex Nuts



Washers



Structural Assemblies



Anchors Bolts



Rivet



Petrochemical Studbolts



Flange Bolts



Carriage bolts



Knobs



Brackets



Banjo Bolts

## Products Description

KMW has pioneered itself in field of Metal fittings by its unparalleled products and fittings, quality, innovations and constant objective to serve global market. We offer optimum quality Brass Fittings which are used in engineering, mechanical and automobile, automotive and other industrial sectors. Our Fitting Parts are based on small external dimensions to large internal ones. Furthermore, the use of quality approved raw material in our range ensures durability, tensile strength and resistivity to adverse conditions. Our range of Metal Fittings is highly suitable to be used in different sorts of industrial applications and appreciated by our global clients.



Coupling



Adapters



Elbow



Plug



Reducer



Union



Flanges



Valve



Bushings



Nipple



Cap



Tee Fittings

# Quality Assurance

Kyone Metal World, Inc. maintains a C=0 sampling plan and wide range of quality assurance measures to ensure that each and every part is manufactured to tight tolerances and the highest qualities. Our quality assurance measures include in-process inspections that are performed regularly throughout the entire manufacturing process. It's a standard that has enabled Kyone Metal World to provide a very low PPM rating ongoing, while streamlining and optimizing our approach to manufacturing. 100% high-speed vision sorting for attaining higher AQL and even lower PPM is available upon request for high volume production

**COMMITTED TO QUALITY. COMMITTED TO YOU.**



# Quality Policy

Quality steers our growth. Quality and durability are the hallmark of our products. We have adopted a stringent quality control system of international standards that is in-built in our production process. Our quality is the strong attraction of our buyers and our products command good consumer acceptance. Our team of quality control experts ensures that quality is maintained at each level of manufacturing process, from the procurement of the raw materials to the dispatch of the finish products.

# Occupational Health & Safety

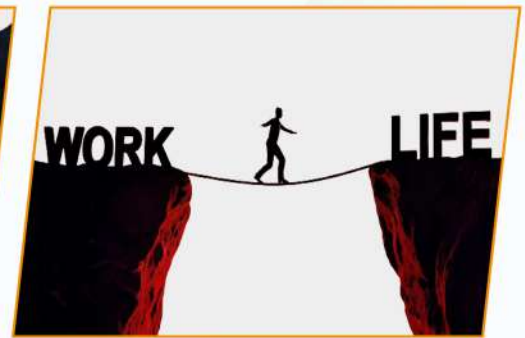
Kyone Metal World is pledged to providing a safe working environment, equipment and facilities to our employees, workers or staff. We consider the health, safety and welfare of our employees at work to be an essential part of existence.



➤ Risk Assessment



➤ Injury Prevention



➤ Work-life Balance



➤ Safety Protocols



➤ Workplace Hazards



➤ Compensation & Benefits



➤ Employee Management

# Contact Details

## Factory & Postal Address



Near A. E. Sariya Lokhandwala, C. S. No - 118/2,  
Near Bharti Hotel, Bedi Gate,  
Jamnagar - 361002, Gujarat (India)

## Corporate Office Address



502 - Siddhi Vinayak Complex, Near Seva Sadan - 4,  
Rajpark Street No - 1, Rajkot Highway Road,  
Jamnagar - 361008, Gujarat (India)

## Contact Details

 +91 7990930787

## Email Id

 [Info@kyonemetalworld.com](mailto:Info@kyonemetalworld.com)

 [sales@kyonemetalworld.com](mailto:sales@kyonemetalworld.com)

## Website

 [www.kyonemetalworld.com](http://www.kyonemetalworld.com)